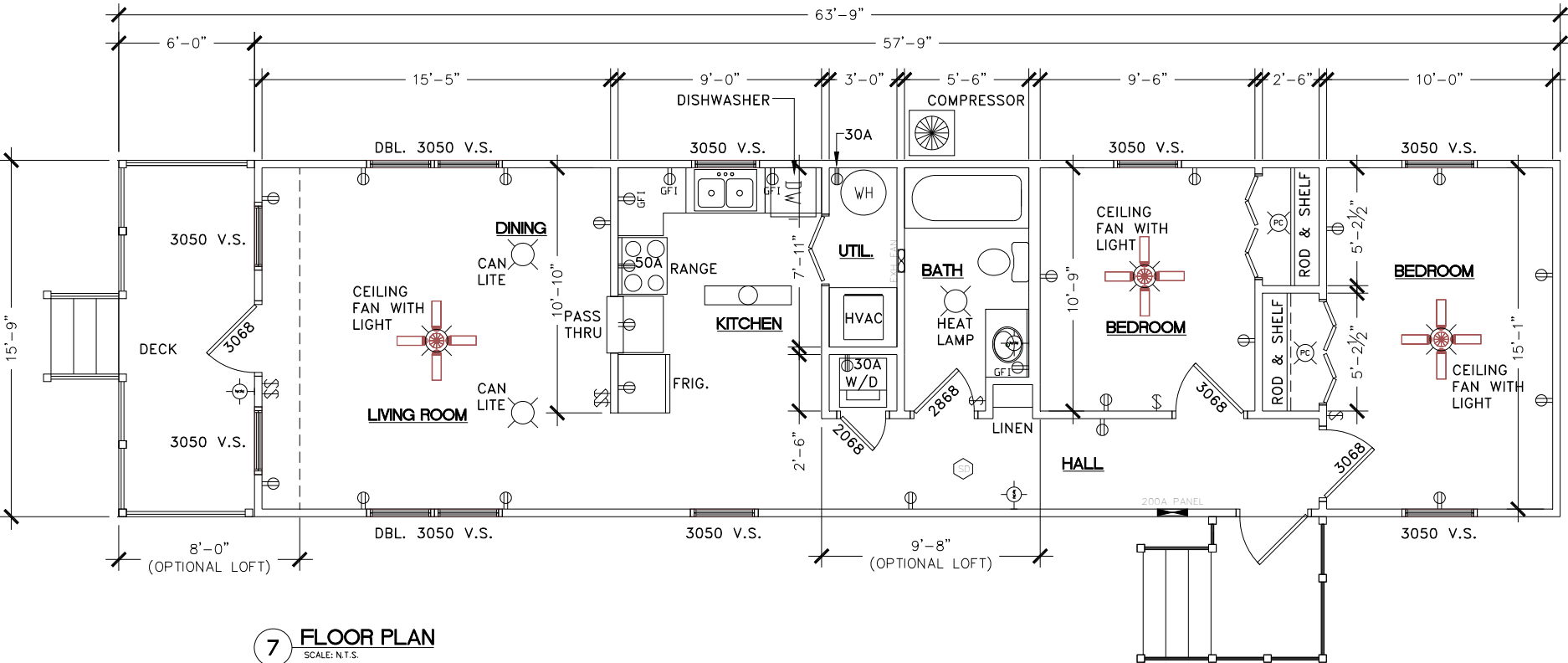


16' X 64'-DRAWING A7

"The Longfellow"



Morgan



16' x 64' – DRAWING A7- *“The Longfellow”*

Square Feet of Conditioned Floor Space	928 SF
Square Feet of (2) Loft area 8 x16	256 SF
Total Sq. Ft. of Conditioned Space	1184 SF
Front Porch 6' x 16' and Side Porch 5' x 6'	

Features:

Open Living Space, Kitchen and Dining Area
1-Full Bath with Tub/ Shower Combination, Vanity Sink, & Water Closet
Building Designs to Meet High Wind Conditions-Depending on each Local.
Pantry or Broom Closet
HVAC-Central Fredrich Heat Pump System
3-Variable Speed Ceiling Fans
Adjustable Mood Lighting
20-year vinyl flooring and 10 year wear carpet
Insulated Steel Entrance Door with Half Glass
Single hung windows with double pane, low “E” glass, screen, and mini blinds
Pre-finished ¼” wood paneling and ½” vinyl gypsum
Interior doors are all pre-finished, therefore no painting or staining required

Appliances included:

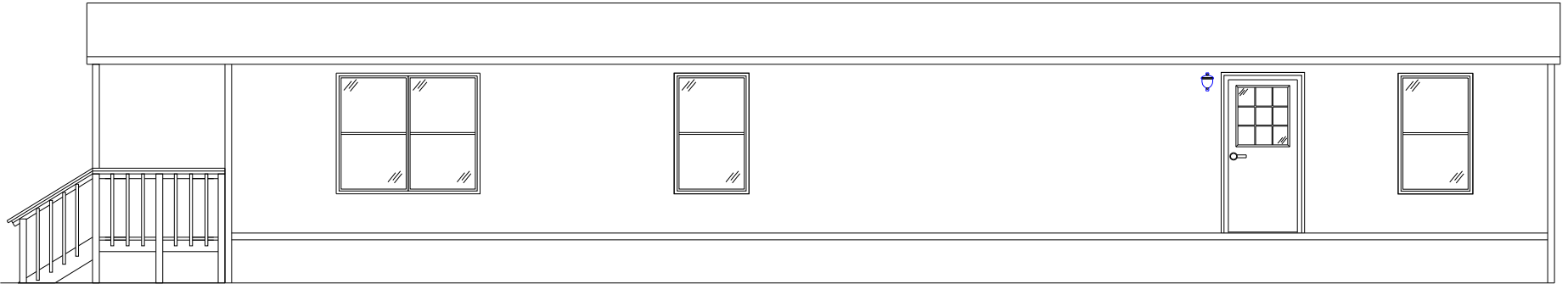
- (1) Electric Range/Oven
- (1) Microwave mounted over Range
- (1) Stackable Washer and Dryer
- (1) Frost Free Refrigerator
- (1) Dishwasher installed under the counter

Hidden Features:

All joists and floor framing is treated with 15% solution of borate for protection against termites.
All exterior bands are pressure treated with ACQ and painted for maximum protection against the elements and insects
6” x 6” pressure treated graders designed for a lifetime warranty
Exterior shown with Smart Panel siding. (See Literature enclosed)
Select from the custom colors of Smart Panel or choose from our wide variety of pre-finished painted steel siding and trim.

DRAWING A7-ELEVATIONS

“The Longfellow”



7A ELEVATION-RIGHT SIDE
SCALE: N.T.S.

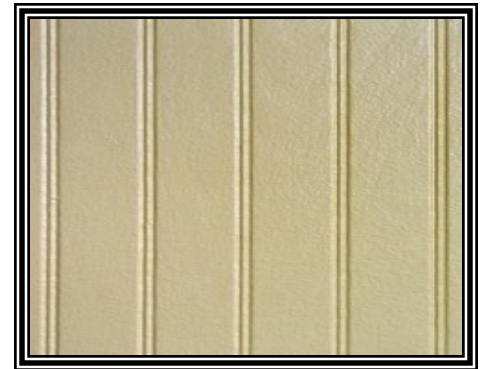
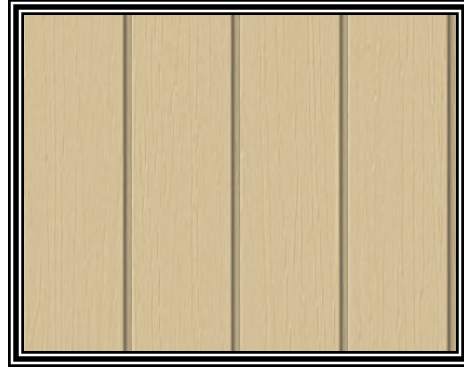


7B ELEVATION-FRONT
SCALE: N.T.S.



Morgan

And Exteriors



Morgan

Kitchen



Morgan

Loft



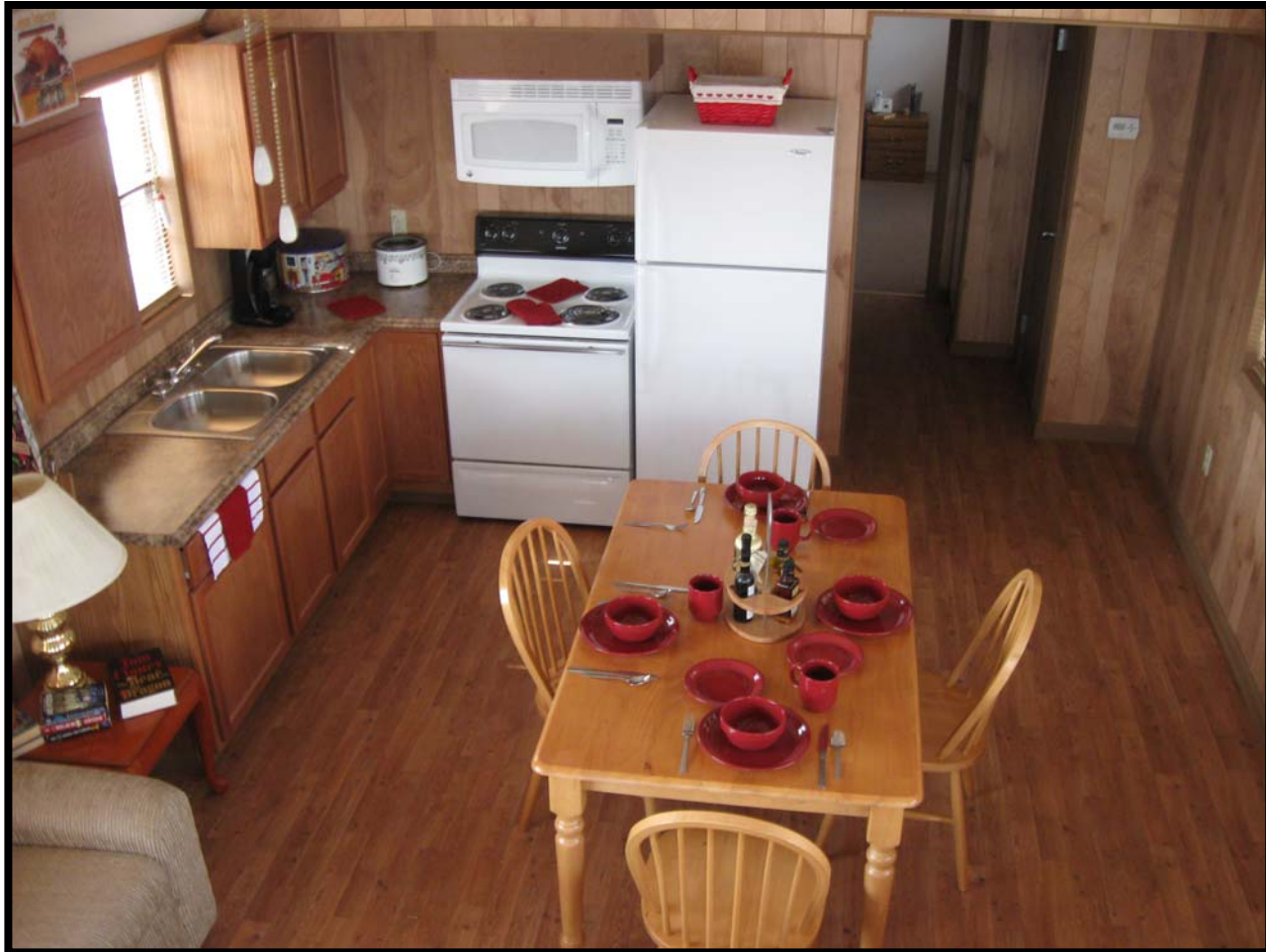
Morgan

*Living Room and
Front Loft*



Morgan

Dining Area



Morgan

Shower & Vanity



Morgan

Bedroom



Morgan

Laundry and Pantry

