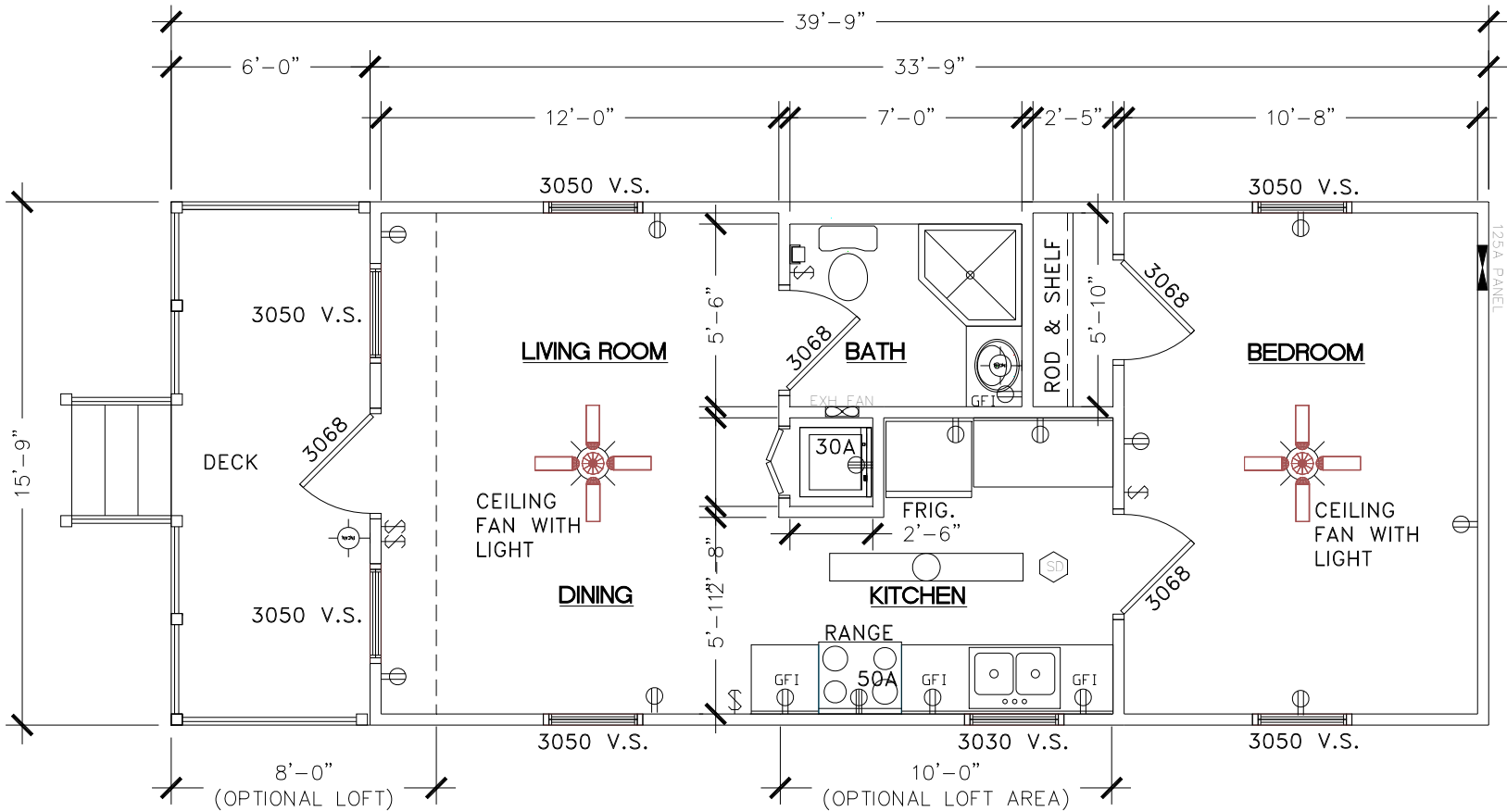


16' X 40'-DRAWING A1

"The Huntsman"



1 FLOOR PLAN
SCALE: N.T.S.





16' x 40' – DRAWING A1- *“The Huntsman”*

Square Feet of Conditioned Floor Space	544 SF
Square Feet of (1) Loft area 8 x16	128 SF
Total Sq. Ft. of Conditioned Space	672 SF
Front Porch 6' x 16'	

Features:

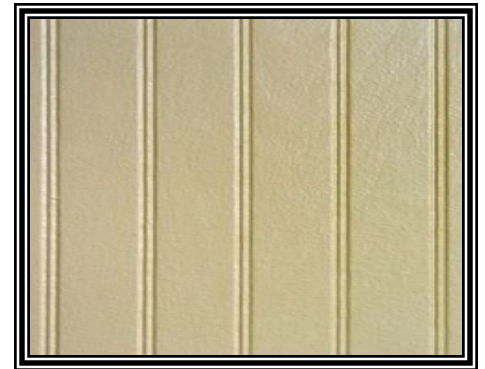
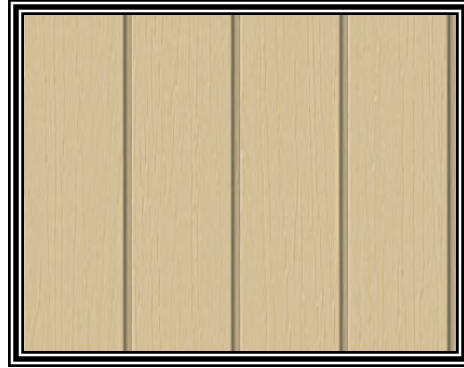
- Open Living Space, Kitchen and Dining Area
- 1-Corner Shower, Vanity Sink & Water Closet
- Building Designs to Meet High Wind Conditions-Depending on each Local.
- Stackable Washer and Dryer
- HVAC-Central Fredrich Heat Pump System
- 2-Variable Speed Ceiling Fans
- Adjustable Mood Lighting
- 20-year vinyl flooring and 10 year wear carpet
- Insulated Steel Entrance Door with Half Glass
- Single hung windows with double pane, low “E” glass, screen, and mini blinds
- Pre-finished ¼” wood paneling and ½” vinyl gypsum
- Interior doors are all pre-finished, therefore no painting or staining required
- Appliances included:
 - (1) Electric Range/Oven
 - (1) Microwave mounted over Range
 - (1) Stackable Washer and Dryer
 - (1) Frost Free Refrigerator
- Furniture options available. (TV is not a part of Furniture option)

Hidden Features:

- All joists and floor framing is treated with 15% solution of borate for protection against termites.
- All exterior bands are pressure treated with ACQ and painted for maximum protection against the elements and insects
- 6” x 6” pressure treated graders designed for a lifetime warranty
- Exterior shown with Smart Panel siding. (See Literature enclosed)
- Select from the custom colors of Smart Panel or choose from our wide variety of pre-finished painted steel siding and trim.

Morgan

And Exteriors



Morgan

Kitchen



Morgan

Loft



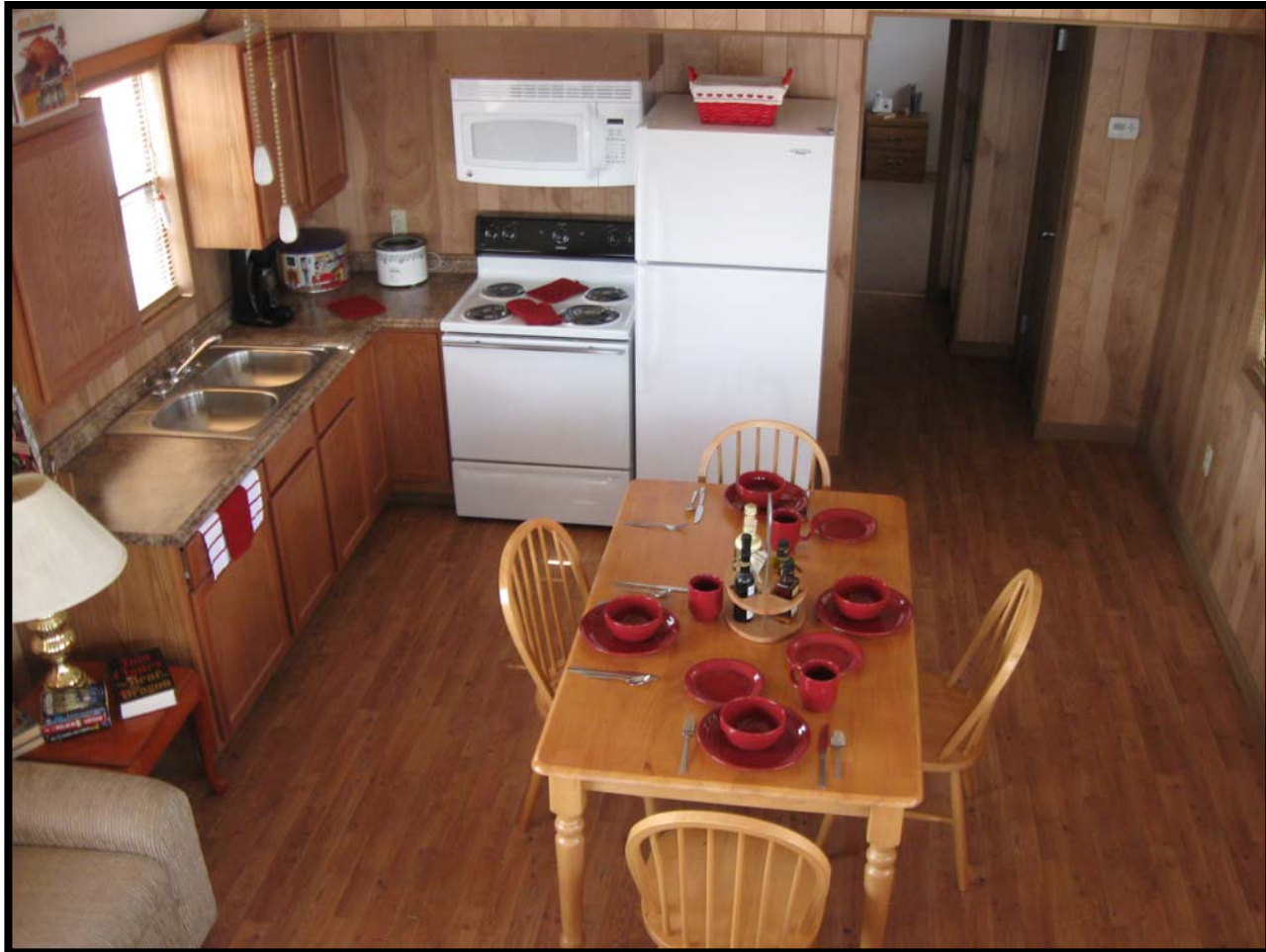
Morgan

*Living Room and
Front Loft*



Morgan

Dining Area



Morgan

Shower & Vanity



Morgan

Bedroom



Morgan

Laundry and Pantry

