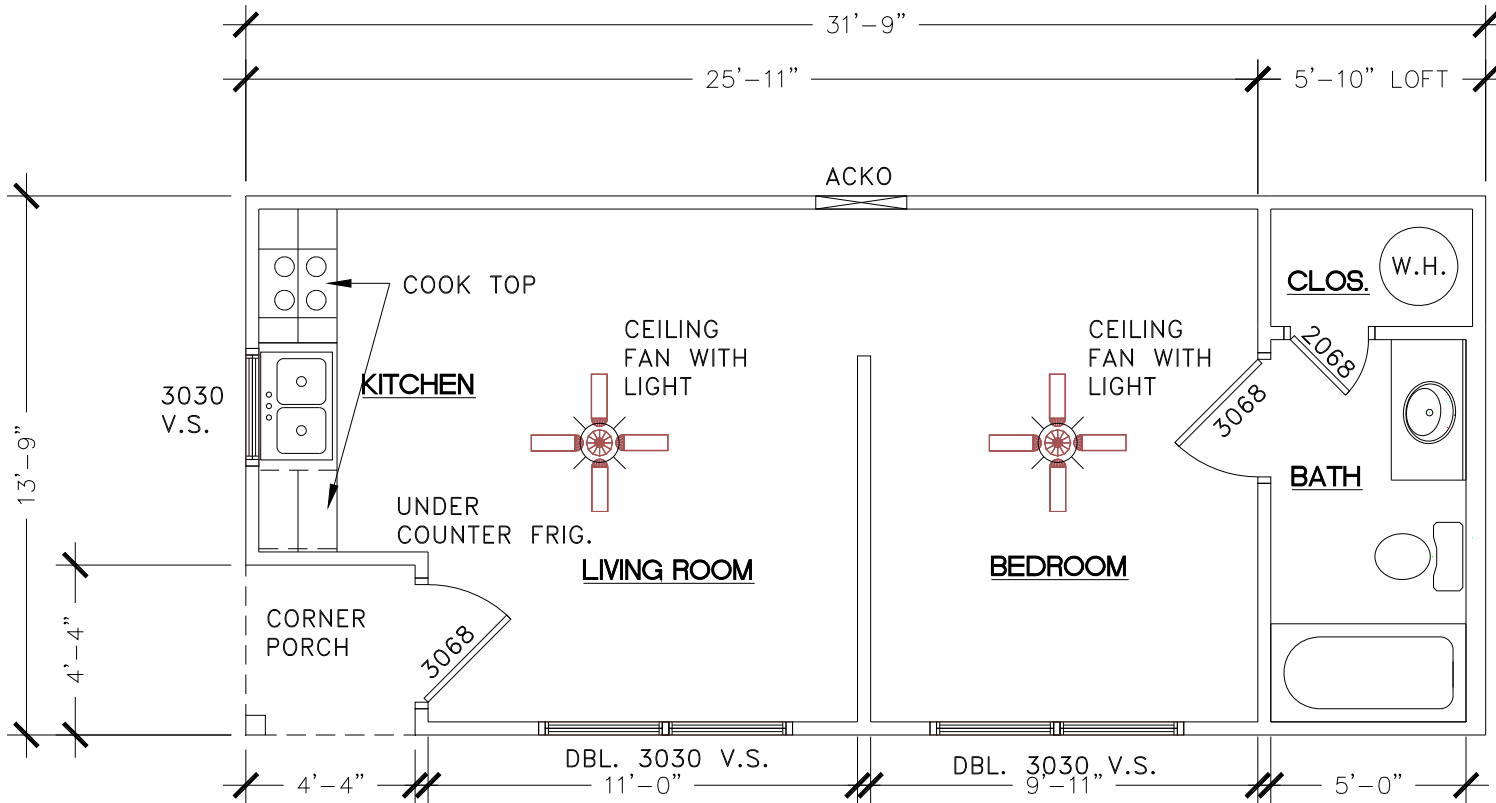


14' X 32'-DRAWING A10

"The Angler"



10 FLOOR PLAN
SCALE: N.T.S.





14' x 32' – DRAWING A10- *“The Angler”*

Square Feet of Conditioned Floor Space	440 SF
Loft 5'-10" x 14'	84 SF
Total Sq. Ft. of Conditioned Space	524 SF
Front Porch 4'-4" x 4'-4"	

Features:

- Open Living Space, Kitchen and Dining Area
- 1-Full Bath with Tub/ Shower Combination, Vanity Sink and Water Closet
- Building Designs to Meet High Wind Conditions-Depending on each Local.
- HVAC-Central Fredrich Heat Pump System
- 2-Variable Speed Ceiling Fans
- Adjustable Mood Lighting
- 20-year vinyl flooring and 10 year wear carpet
- Insulated Steel Entrance Door with Half Glass
- Single hung windows with double pane, low “E” glass, screen, and mini blinds
- Pre-finished ¼” wood paneling and ½” vinyl gypsum
- Interior doors are all pre-finished, therefore no painting or staining required

Appliances included:

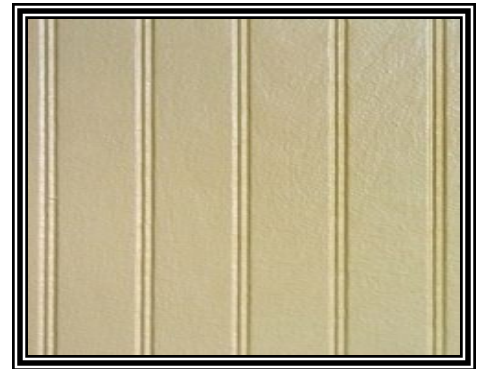
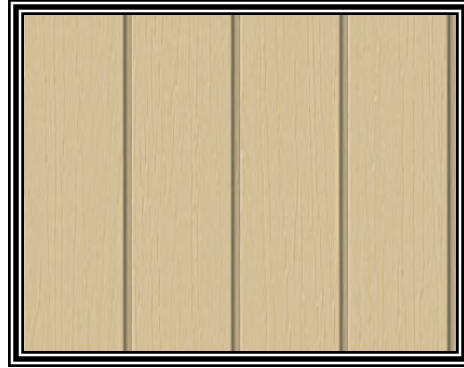
- (1) Electric Cook Top
 - (1) Microwave mounted over Cook Top
 - (1) Under the Counter Refrigerator
- Furniture options available. (TV is not a part of Furniture option)

Hidden Features:

All joists and floor framing is treated with 15% solution of borate for protection against termites.
All exterior bands are pressure treated with ACQ and painted for maximum protection against the elements and insects
6” x 6” pressure treated graders designed for a lifetime warranty
Exterior shown with Smart Panel siding. (See Literature enclosed)
Select from the custom colors of Smart Panel or choose from our wide variety of pre-finished painted steel siding and trim.

Morgan

And Exteriors



Morgan

Kitchen



Morgan

Loft



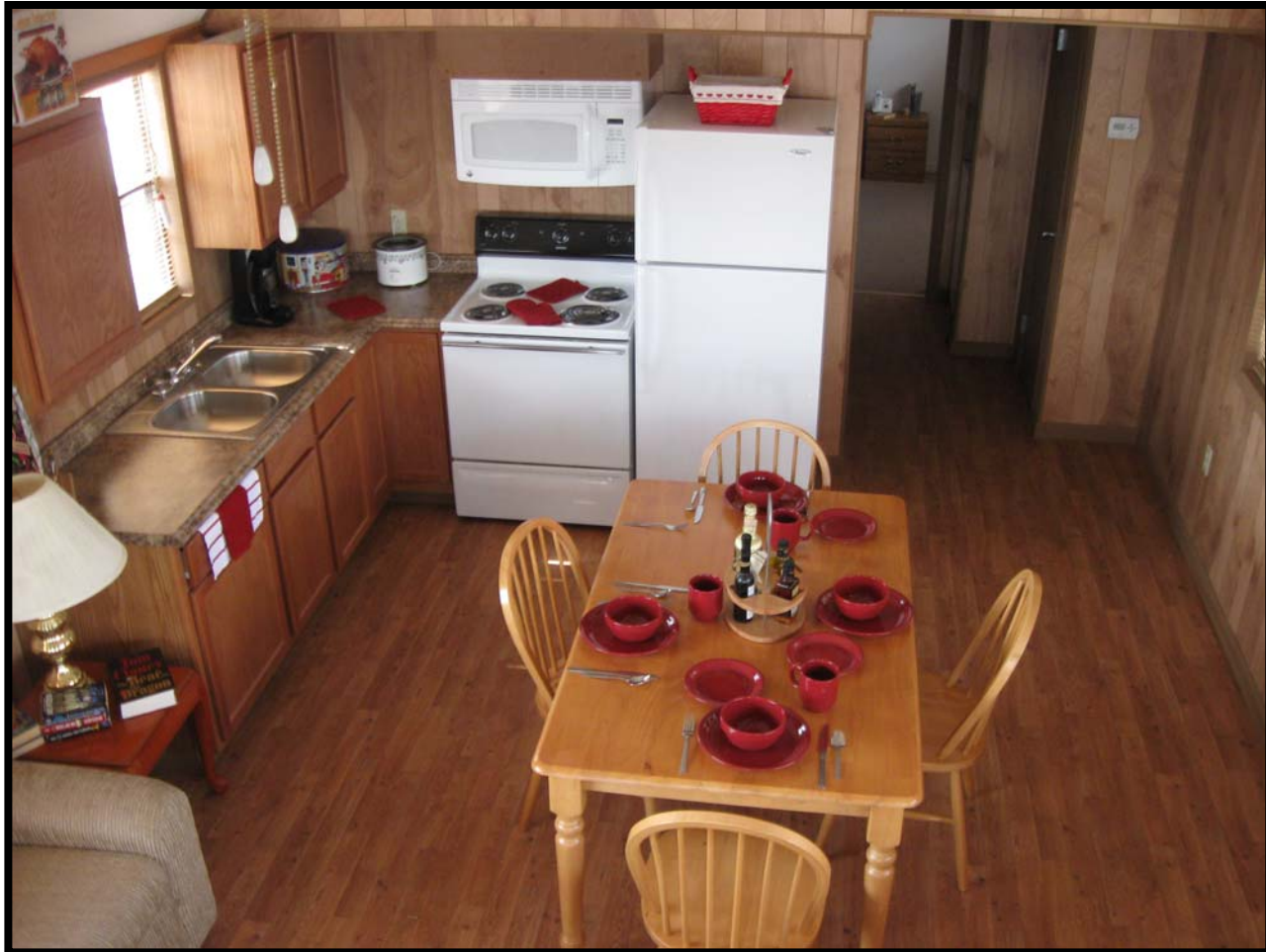
Morgan

*Living Room and
Front Loft*



Morgan

Dining Area



Morgan

Shower & Vanity



Morgan

Bedroom



Morgan

Laundry and Pantry

