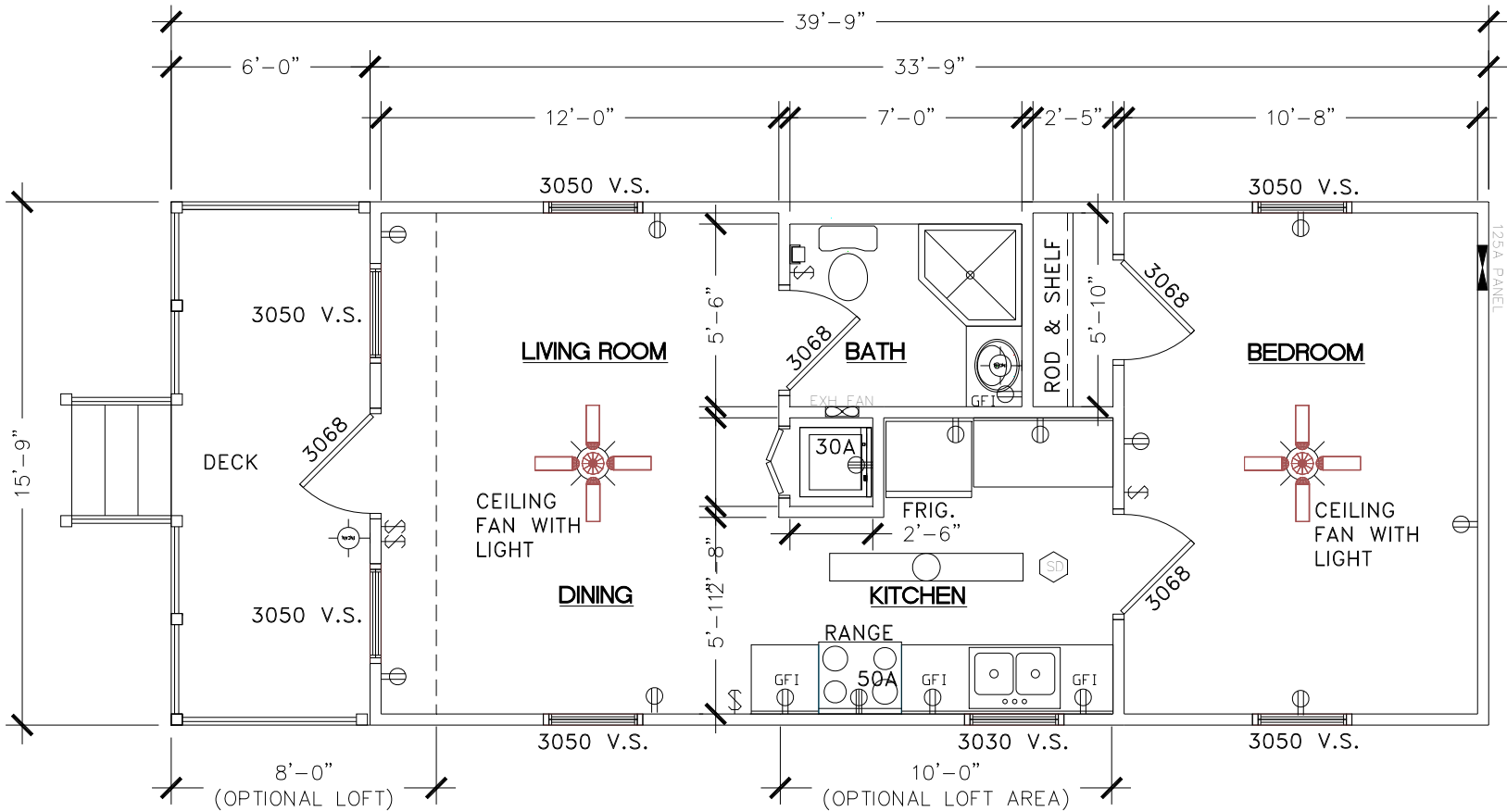


16' X 40'-DRAWING A1

"The Huntsman"



1 FLOOR PLAN
SCALE: N.T.S.





16' x 40' – DRAWING A1- *“The Huntsman”*

| | |
|--|--------|
| Square Feet of Conditioned Floor Space | 544 SF |
| Square Feet of (1) Loft area 8 x16 | 128 SF |
| Total Sq. Ft. of Conditioned Space | 672 SF |
| Front Porch 6' x 16' | |

Features:

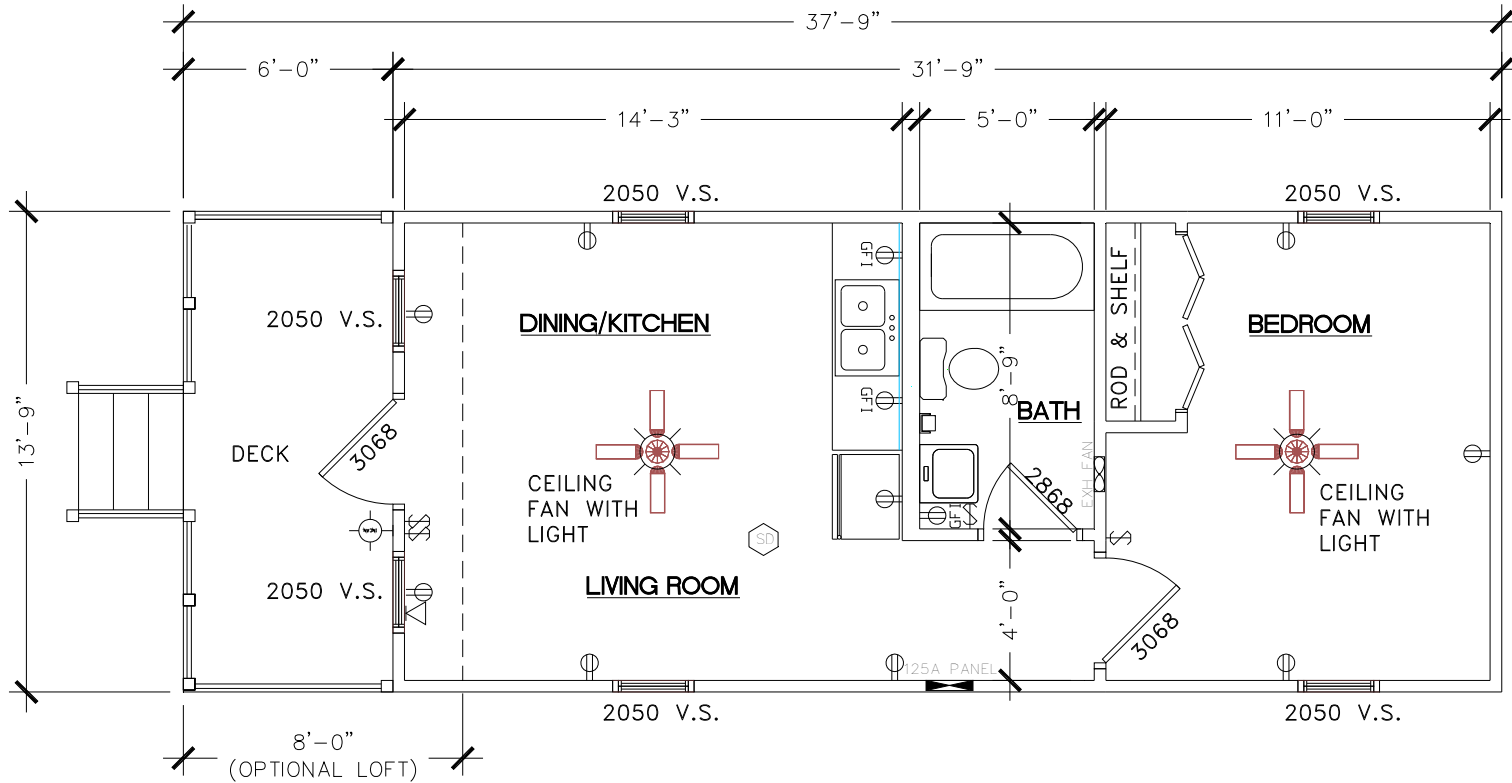
- Open Living Space, Kitchen and Dining Area
- 1-Corner Shower, Vanity Sink & Water Closet
- Building Designs to Meet High Wind Conditions-Depending on each Local.
- Stackable Washer and Dryer
- HVAC-Central Fredrich Heat Pump System
- 2-Variable Speed Ceiling Fans
- Adjustable Mood Lighting
- 20-year vinyl flooring and 10 year wear carpet
- Insulated Steel Entrance Door with Half Glass
- Single hung windows with double pane, low “E” glass, screen, and mini blinds
- Pre-finished ¼” wood paneling and ½” vinyl gypsum
- Interior doors are all pre-finished, therefore no painting or staining required
- Appliances included:
 - (1) Electric Range/Oven
 - (1) Microwave mounted over Range
 - (1) Stackable Washer and Dryer
 - (1) Frost Free Refrigerator
- Furniture options available. (TV is not a part of Furniture option)

Hidden Features:

- All joists and floor framing is treated with 15% solution of borate for protection against termites.
- All exterior bands are pressure treated with ACQ and painted for maximum protection against the elements and insects
- 6” x 6” pressure treated graders designed for a lifetime warranty
- Exterior shown with Smart Panel siding. (See Literature enclosed)
- Select from the custom colors of Smart Panel or choose from our wide variety of pre-finished painted steel siding and trim.

14' X 38'-DRAWING A2

"The Lone Star"



2 FLOOR PLAN
SCALE: N.T.S.





14' x 38' – DRAWING A2- *“The Lone Star”*

| | |
|--|--------|
| Square Feet of Conditioned Floor Space | 448 SF |
| Square Feet of (1) Loft area 8 x 14 | 112 SF |
| Total Sq. Ft. of Conditioned Space | 560 SF |
| Front Porch 6' x 16' | |

Features:

- Open Living Space, Kitchen and Dining Area
- 1-Full Bath with Tub/ Shower Combination, Lavatory, & Water Closet
- Building Designs to Meet High Wind Conditions-Depending on each Local.
- HVAC-Central Fredrich Heat Pump System
- 2-Variable Speed Ceiling Fans
- Adjustable Mood Lighting
- 20-year vinyl flooring and 10 year wear carpet
- Insulated Steel Entrance Door with Half Glass
- Single hung windows with double pane, low “E” glass, screen, and mini blinds
- Pre-finished ¼” wood paneling and ½” vinyl gypsum
- Interior doors are all pre-finished, therefore no painting or staining required
- Appliances included:
 - (1) Microwave mounted over Range
 - (1) Frost Free Refrigerator

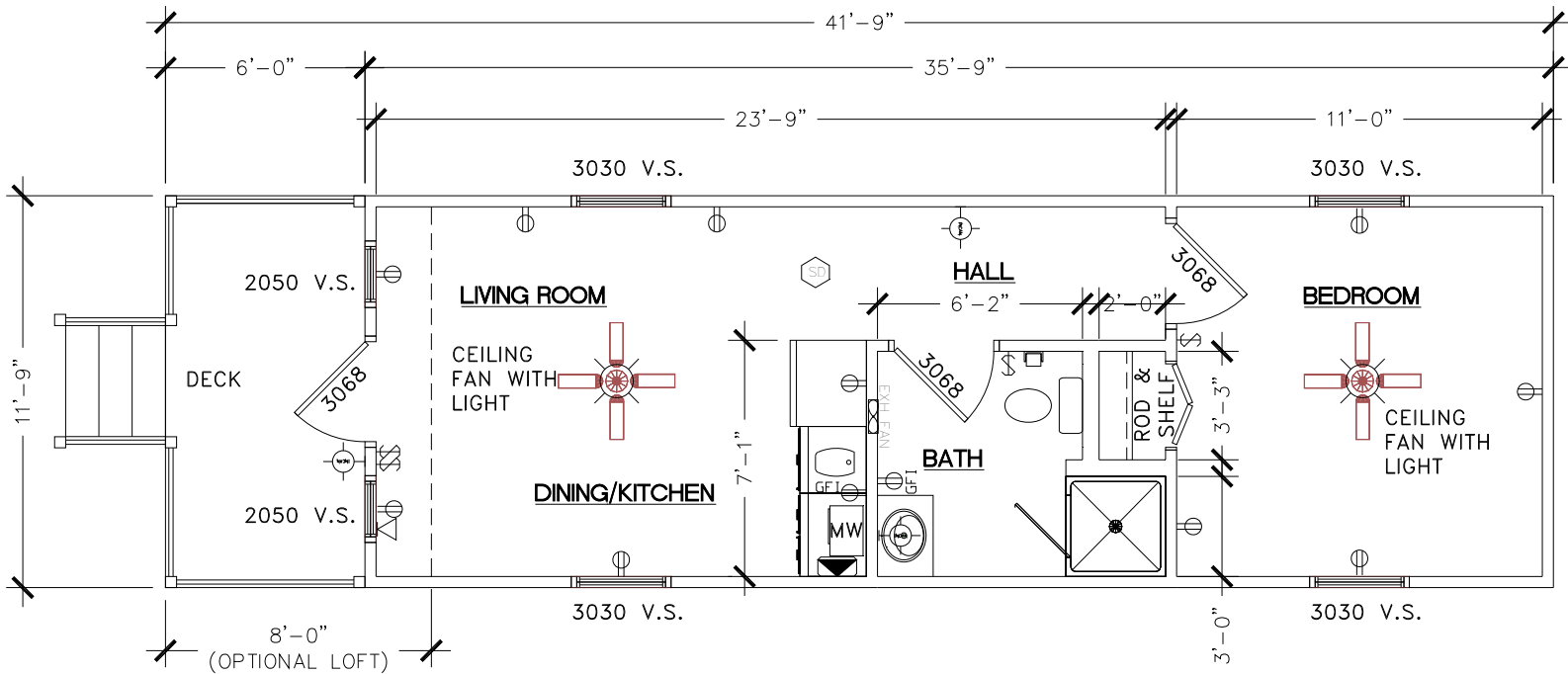
Furniture options available. (TV is not a part of Furniture option)

Hidden Features:

- All joists and floor framing is treated with 15% solution of borate for protection against termites.
- All exterior bands are pressure treated with ACQ and painted for maximum protection against the elements and insects
- 6” x 6” pressure treated graders designed for a lifetime warranty
- Exterior shown with Smart Panel siding. (See Literature enclosed)
- Select from the custom colors of Smart Panel or choose from our wide variety of pre-finished painted steel siding and trim.

12' X 42'-DRAWING A3

"The Sierra"



3 FLOOR PLAN
SCALE: N.T.S.





12' x 42' – DRAWING A3- *“The Sierra”*

| | |
|--|--------|
| Square Feet of Conditioned Floor Space | 432 SF |
| Square Feet of (1) Loft area 8 x 12 | 96 SF |
| Total Sq. Ft. of Conditioned Space | 528 SF |
| Front Porch 6' x 16' | |

Features:

Open Living Space, Kitchen and Dining Area
1-Full Bath with Tub/ Shower Combination, Vanity Sink, & Water Closet
Building Designs to Meet High Wind Conditions-Depending on each Local.
HVAC-Central Fredrich Heat Pump System
2-Variable Speed Ceiling Fans
Building Designs to Meet High Wind Conditions-Depending on each Local.
Adjustable Mood Lighting
20-year vinyl flooring and 10 year wear carpet
Insulated Steel Entrance Door with Half Glass
Single hung windows with double pane, low “E” glass, screen, and mini blinds
Pre-finished ¼” wood paneling and ½” vinyl gypsum
Interior doors are all pre-finished, therefore no painting or staining required

Appliances included:

- (1) Microwave mounted over Range
- (1) Frost Free Refrigerator

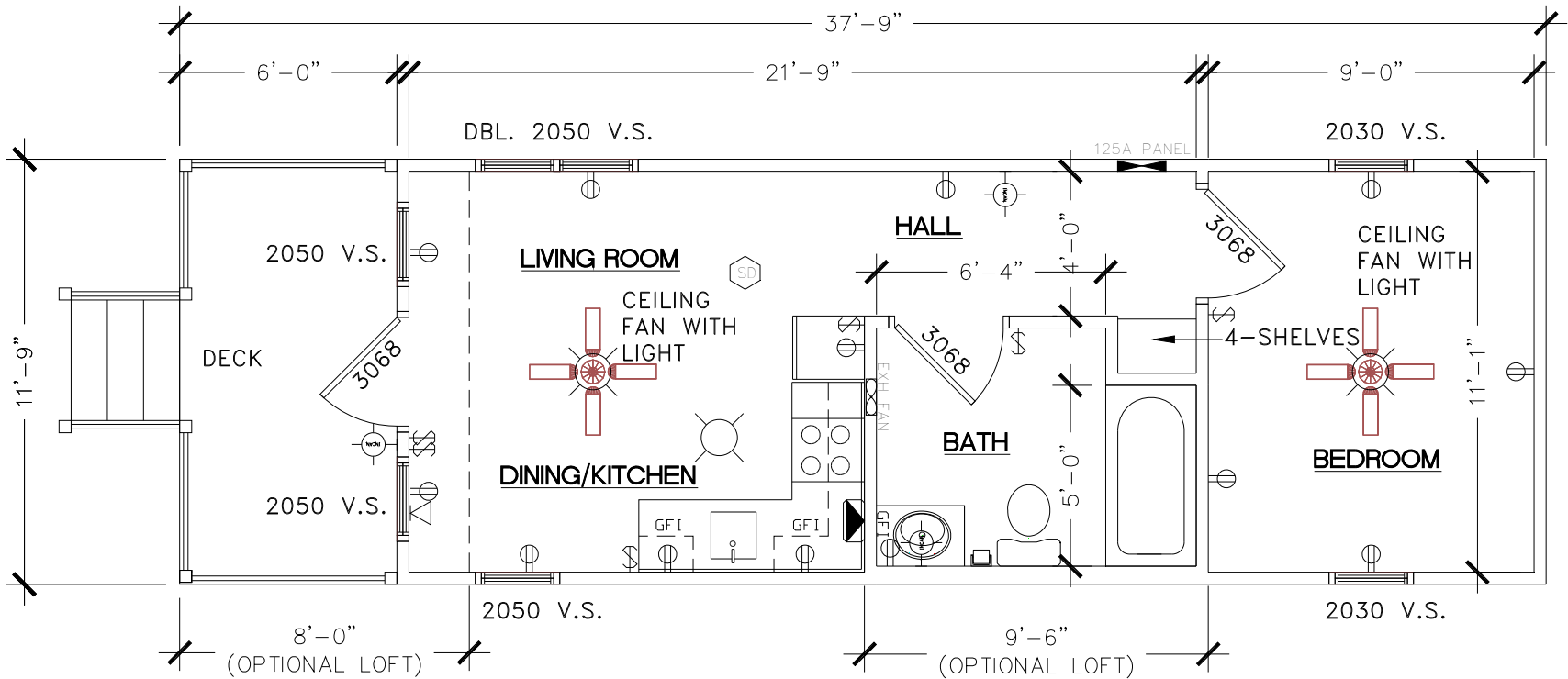
Furniture options available. (TV is not a part of Furniture option)

Hidden Features:

All joists and floor framing is treated with 15% solution of borate for protection against termites.
All exterior bands are pressure treated with ACQ and painted for maximum protection against the elements and insects
6” x 6” pressure treated graders designed for a lifetime warranty
Exterior shown with Smart Panel siding. (See Literature enclosed)
Select from the custom colors of Smart Panel or choose from our wide variety of pre-finished painted steel siding and trim.

12' X 38'-DRAWING A4

"The South Western"



4 FLOOR PLAN
SCALE: N.T.S.





12' x 38' – DRAWING A4- *“The South Western”*

| | |
|--|--------|
| Square Feet of Conditioned Floor Space | 456 SF |
| Square Feet of (1) Loft area 8 x 12 | 96 SF |
| Total Sq. Ft. of Conditioned Space | 552 SF |
| Front Porch 6' x 16' | |

Features:

- Open Living Space, Kitchen and Dining Area
- 1-Full Bath with Tub/ Shower Combination, Vanity Sink, & Water Closet
- Building Designs to Meet High Wind Conditions-Depending on each Local.
- Pantry or Broom Closet
- HVAC-Central Fredrich Heat Pump System
- 2-Variable Speed Ceiling Fans
- Adjustable Mood Lighting
- 20-year vinyl flooring and 10 year wear carpet
- Insulated Steel Entrance Door with Half Glass
- Single hung windows with double pane, low “E” glass, screen, and mini blinds
- Pre-finished ¼” wood paneling and ½” vinyl gypsum
- Interior doors are all pre-finished, therefore no painting or staining required
- Appliances included:
 - (1) Electric Range Top
 - (1) Microwave mounted over Range
 - (1) Frost Free Refrigerator

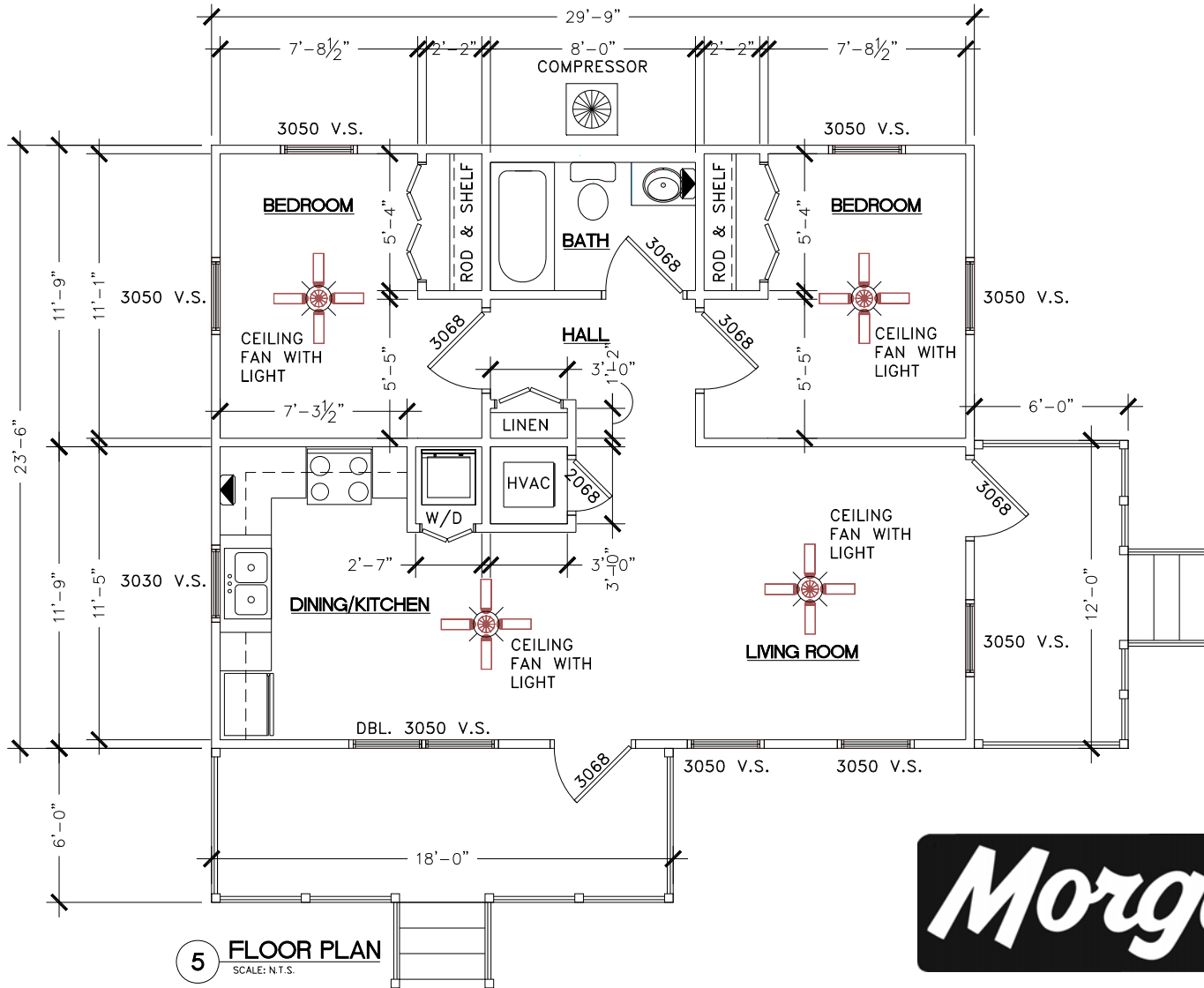
Furniture options available. (TV is not a part of Furniture option)

Hidden Features:

- All joists and floor framing is treated with 15% solution of borate for protection against termites.
- All exterior bands are pressure treated with ACQ and painted for maximum protection against the elements and insects
- 6” x 6” pressure treated graders designed for a lifetime warranty
- Exterior shown with Smart Panel siding. (See Literature enclosed)
- Select from the custom colors of Smart Panel or choose from our wide variety of pre-finished painted steel siding and trim.

24' X 30'-DRAWING A5

"The Ponderosa"



5 FLOOR PLAN
SCALE: N.T.S.





24' x 30' – DRAWING A5- *“The Ponderosa”*

| | |
|--|--------|
| Square Feet of Conditioned Floor Space | 720 SF |
| Total Sq. Ft. of Conditioned Space | 720 SF |
| Front Porch 6' x 18' and Side Porch 6' x 12' | |

Features:

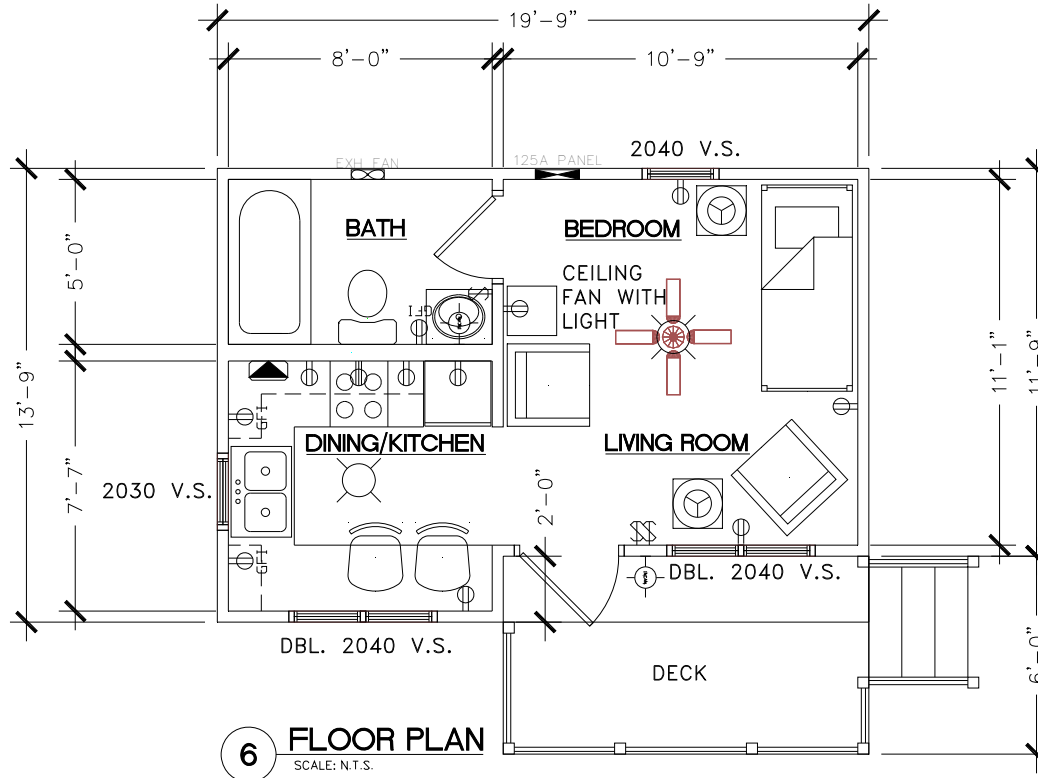
- Open Living Space, Kitchen and Dining Area
- 1-Full Bath with Tub/ Shower Combination, Vanity Sink & Water Closet
- Building Designs to Meet High Wind Conditions-Depending on each Local.
- Pantry or Broom Closet
- HVAC-Central Fredrich Heat Pump System
- 4-Variable Speed Ceiling Fans
- Adjustable Mood Lighting
- 20-year vinyl flooring and 10 year wear carpet
- Insulated Steel Entrance Door with Half Glass
- Single hung windows with double pane, low “E” glass, screen, and mini blinds
- Pre-finished ¼” wood paneling and ½” vinyl gypsum
- Interior doors are all pre-finished, therefore no painting or staining required
- Appliances included:
 - (1) Electric Range/Oven
 - (1) Microwave mounted over Range
 - (1) Stackable Washer and Dryer
 - (1) Frost Free Refrigerator
- Furniture options available. (TV is not a part of Furniture option)

Hidden Features:

- All joists and floor framing is treated with 15% solution of borate for protection against termites.
- All exterior bands are pressure treated with ACQ and painted for maximum protection against the elements and insects
- 6” x 6” pressure treated graders designed for a lifetime warranty
- Exterior shown with Smart Panel siding. (See Literature enclosed)
- Select from the custom colors of Smart Panel or choose from our wide variety of pre-finished painted steel siding and trim.

14' X 20'-DRAWING A6

"The Mountaineer"



Morgan



14' x 20' – DRAWING A6- *“The Mountaineer”*

| | |
|--|--------|
| Square Feet of Conditioned Floor Space | 280 SF |
| Total Sq. Ft. of Conditioned Space | 280 SF |
| Front Porch 6' x 11' | |

Features:

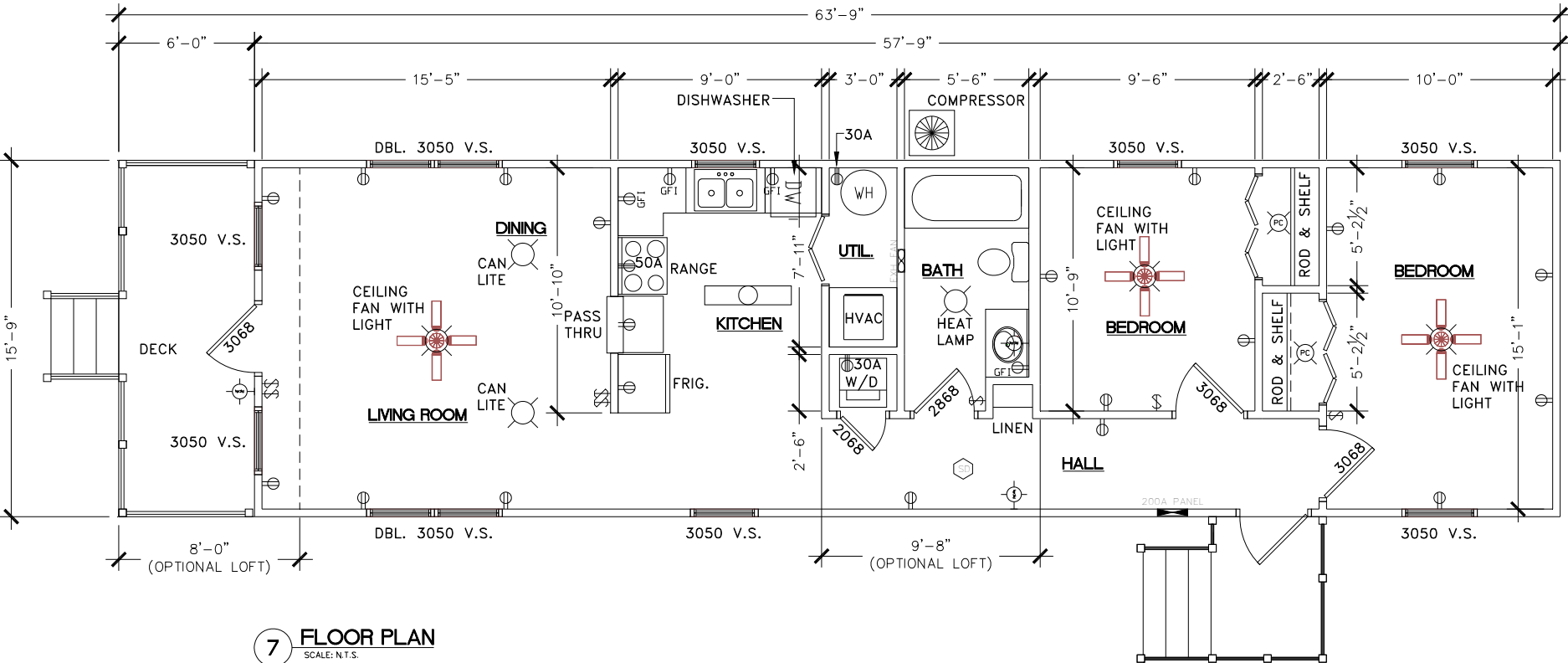
- Open Living Space, Kitchen and Dining Area
- 1-Full Bath with Tub/ Shower Combination & Vanity Sink
- Building Designs to Meet High Wind Conditions-Depending on each Local.
- Stackable Washer and Dryer
- Pantry or Broom Closet
- HVAC-Central Fredrich Heat Pump System
- 2-Variable Speed Ceiling Fans
- Adjustable Mood Lighting
- 20-year vinyl flooring and 10 year wear carpet
- Insulated Steel Entrance Door with Half Glass
- Single hung windows with double pane, low “E” glass, screen, and mini blinds
- Pre-finished ¼” wood paneling and ½” vinyl gypsum
- Interior doors are all pre-finished, therefore no painting or staining required
- Appliances included:
 - (1) Electric Range/Oven or Cook Top
 - (1) Microwave mounted over Range
 - (1) Frost Free Refrigerator
- Furniture options available. (TV is not a part of Furniture option)

Hidden Features:

- All joists and floor framing is treated with 15% solution of borate for protection against termites.
- All exterior bands are pressure treated with ACQ and painted for maximum protection against the elements and insects
- 6” x 6” pressure treated graders designed for a lifetime warranty
- Exterior shown with Smart Panel siding. (See Literature enclosed)
- Select from the custom colors of Smart Panel or choose from our wide variety of pre-finished painted steel siding and trim.

16' X 64'-DRAWING A7

"The Longfellow"





16' x 64' – DRAWING A7- *“The Longfellow”*

| | |
|---|---------|
| Square Feet of Conditioned Floor Space | 928 SF |
| Square Feet of (2) Loft area 8 x16 | 256 SF |
| Total Sq. Ft. of Conditioned Space | 1184 SF |
| Front Porch 6' x 16' and Side Porch 5' x 6' | |

Features:

Open Living Space, Kitchen and Dining Area
1-Full Bath with Tub/ Shower Combination, Vanity Sink, & Water Closet
Building Designs to Meet High Wind Conditions-Depending on each Local.
Pantry or Broom Closet
HVAC-Central Fredrich Heat Pump System
3-Variable Speed Ceiling Fans
Adjustable Mood Lighting
20-year vinyl flooring and 10 year wear carpet
Insulated Steel Entrance Door with Half Glass
Single hung windows with double pane, low “E” glass, screen, and mini blinds
Pre-finished ¼” wood paneling and ½” vinyl gypsum
Interior doors are all pre-finished, therefore no painting or staining required

Appliances included:

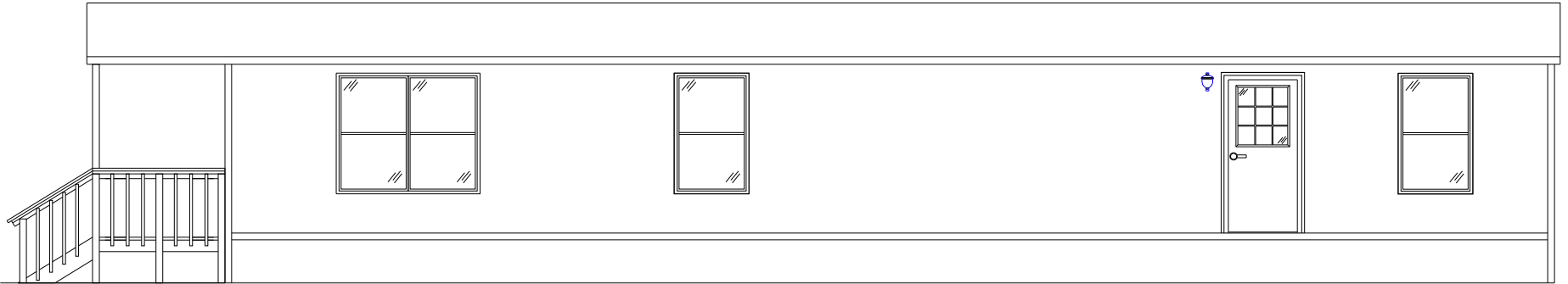
- (1) Electric Range/Oven
- (1) Microwave mounted over Range
- (1) Stackable Washer and Dryer
- (1) Frost Free Refrigerator
- (1) Dishwasher installed under the counter

Hidden Features:

All joists and floor framing is treated with 15% solution of borate for protection against termites.
All exterior bands are pressure treated with ACQ and painted for maximum protection against the elements and insects
6” x 6” pressure treated graders designed for a lifetime warranty
Exterior shown with Smart Panel siding. (See Literature enclosed)
Select from the custom colors of Smart Panel or choose from our wide variety of pre-finished painted steel siding and trim.

DRAWING A7-ELEVATIONS

“The Longfellow”



7A ELEVATION-RIGHT SIDE
SCALE: N.T.S.

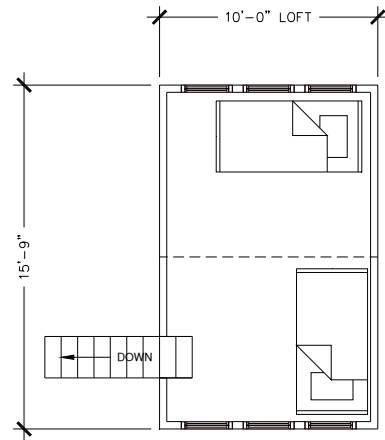
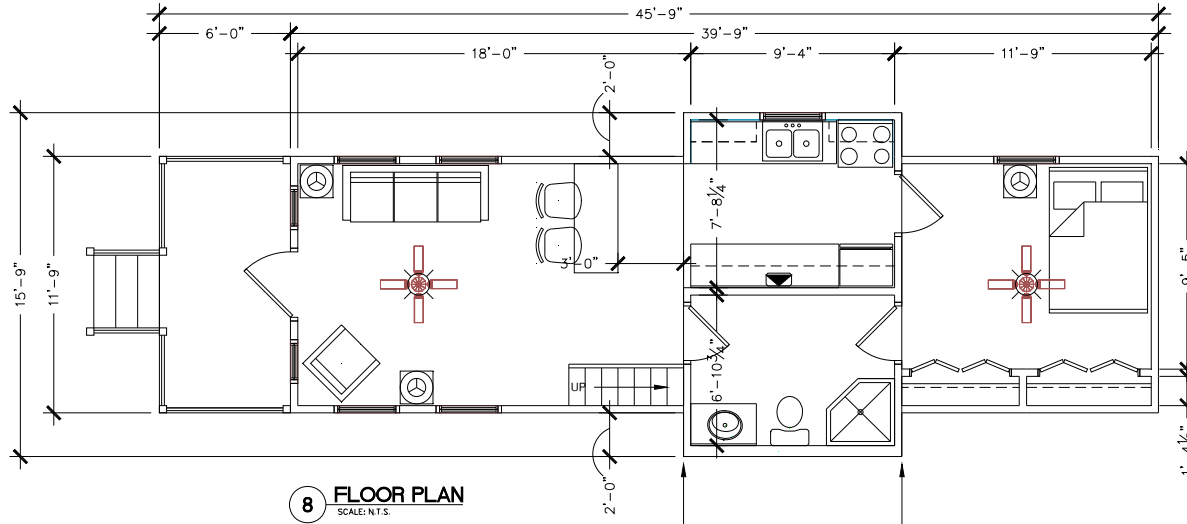


7B ELEVATION-FRONT
SCALE: N.T.S.



16' X 46'-DRAWING A8

"The Wing Master"



8A OPTIONAL LOFT AREA
SCALE: N.T.S.





16' x 40' – DRAWING A8- *“The Wing Master”*

| | |
|--|--------|
| Square Feet of Conditioned Floor Space | 518 SF |
| Square Feet of (1) Loft area 10' x 16' | 160 SF |
| Total Sq. Ft. of Conditioned Space | 678 SF |
| Front Porch 6' x 12' | |

Features:

- Open Living Space, Kitchen and Dining Area
- 1-Corner Shower, Vanity Sink & Water Closet
- Building Designs to Meet High Wind Conditions-Depending on each Local.
- Pantry or Broom Closet
- HVAC-Central Fredrich Heat Pump System
- 2-Variable Speed Ceiling Fans
- Adjustable Mood Lighting
- 20-year vinyl flooring and 10 year wear carpet
- Insulated Steel Entrance Door with Half Glass
- Single hung windows with double pane, low “E” glass, screen, and mini blinds
- Pre-finished ¼” wood paneling and ½” vinyl gypsum
- Interior doors are all pre-finished, therefore no painting or staining required
- Appliances included:
 - (1) Electric Range/Oven
 - (1) Microwave mounted over Range
 - (1) Frost Free Refrigerator

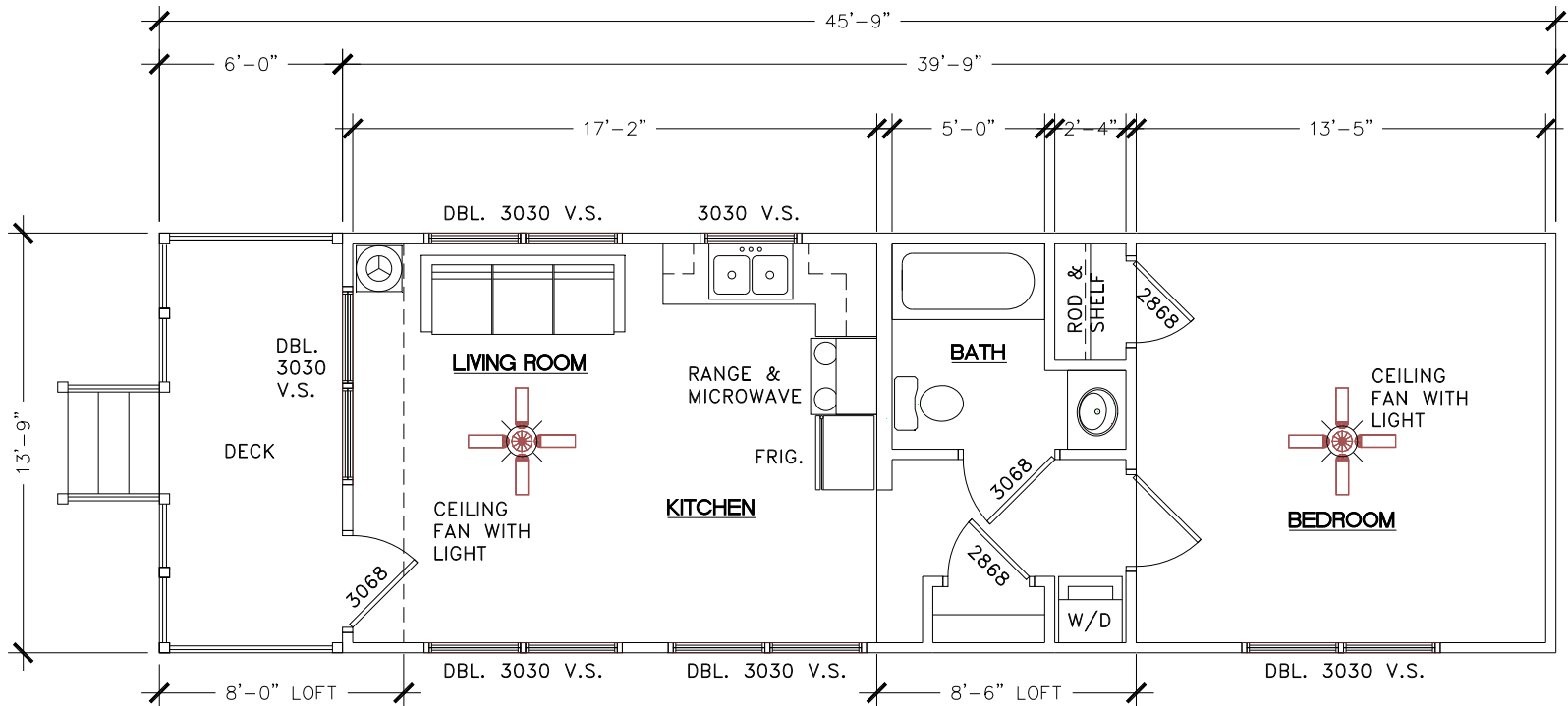
Furniture options available. (TV is not a part of Furniture option)

Hidden Features:

- All joists and floor framing is treated with 15% solution of borate for protection against termites.
- All exterior bands are pressure treated with ACQ and painted for maximum protection against the elements and insects
- 6” x 6” pressure treated graders designed for a lifetime warranty
- Exterior shown with Smart Panel siding. (See Literature enclosed)
- Select from the custom colors of Smart Panel or choose from our wide variety of pre-finished painted steel siding and trim.

14' X 46'-DRAWING A9

"The Outfitter"



9 FLOOR PLAN
SCALE: N.T.S.





14' x 46' – DRAWING A9- *“The Outfitter”*

| | |
|--|--------|
| Square Feet of Conditioned Floor Space | 560 SF |
| Square Feet of (1) Loft area 8 x 14 | 112 SF |
| Square Feet of (1) Loft area 8.5 x 14 | 119 SF |
| Total Sq. Ft. of Conditioned Space | 791 SF |

Front Porch 6' x 14'

Features:

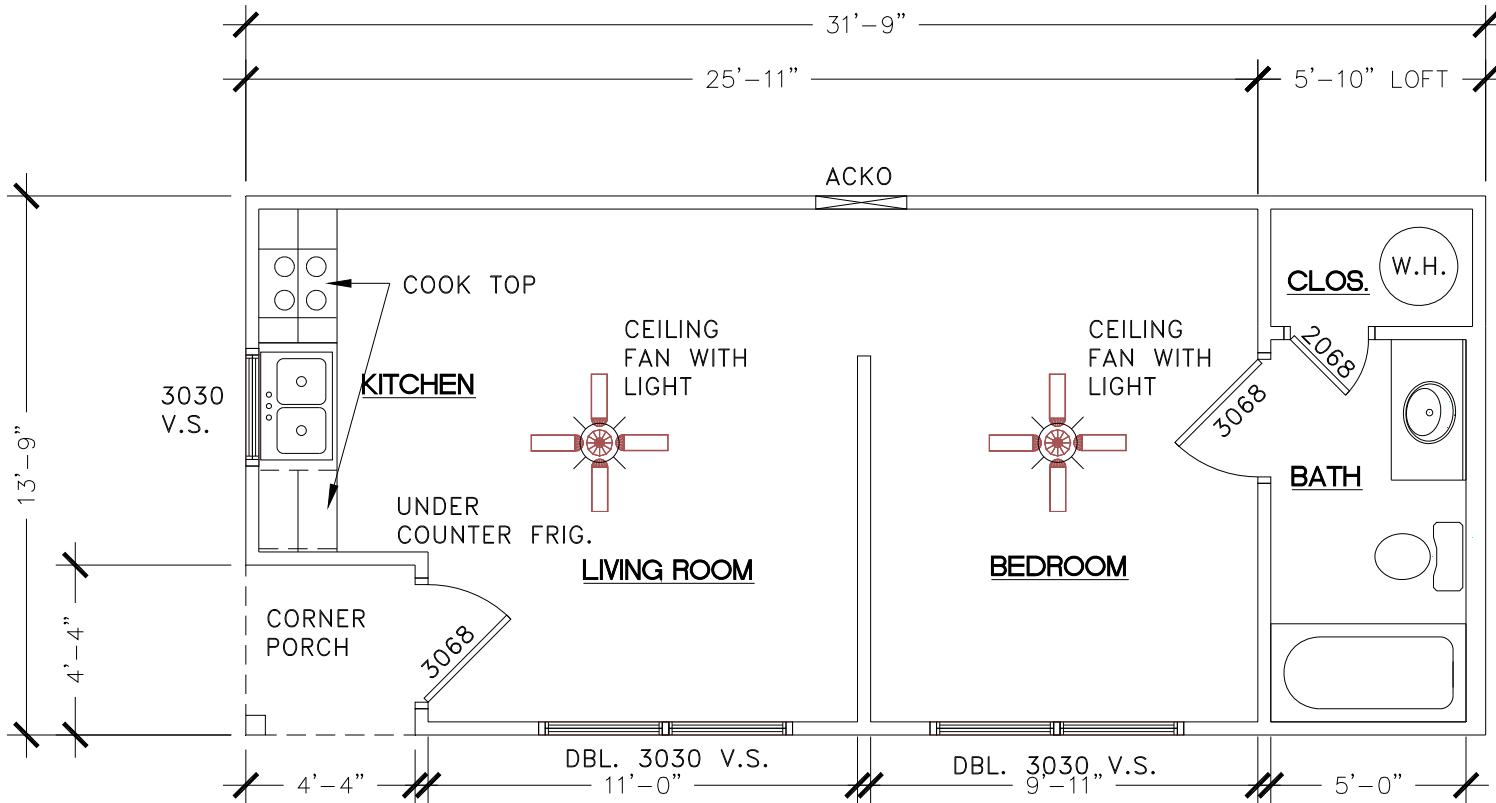
- Open Living Space, Kitchen and Dining Area
- 1-Full Bath with Tub/ Shower Combination, Vanity Sink & Water Closet
- Building Designs to Meet High Wind Conditions-Depending on each Local.
- Pantry or Broom Closet
- HVAC-Central Fredrich Heat Pump System
- 2-Variable Speed Ceiling Fans
- Adjustable Mood Lighting
- 20-year vinyl flooring and 10 year wear carpet
- Insulated Steel Entrance Door with Half Glass
- Single hung windows with double pane, low “E” glass, screen, and mini blinds
- Pre-finished ¼” wood paneling and ½” vinyl gypsum
- Interior doors are all pre-finished, therefore no painting or staining required
- Appliances included:
 - (1) Electric Range/Oven
 - (1) Microwave mounted over Range
 - (1) Stackable Washer and Dryer
 - (1) Frost Free Refrigerator
- Furniture options available. (TV is not a part of Furniture option)

Hidden Features:

- All joists and floor framing is treated with 15% solution of borate for protection against termites.
- All exterior bands are pressure treated with ACQ and painted for maximum protection against the elements and insects
- 6” x 6” pressure treated graders designed for a lifetime warranty
- Exterior shown with Smart Panel siding. (See Literature enclosed)
- Select from the custom colors of Smart Panel or choose from our wide variety of pre-finished painted steel siding and trim.

14' X 32'-DRAWING A10

"The Angler"



10 FLOOR PLAN
SCALE: N.T.S.





14' x 32' – DRAWING A10- *“The Angler”*

| | |
|--|--------|
| Square Feet of Conditioned Floor Space | 440 SF |
| Loft 5'-10" x 14' | 84 SF |
| Total Sq. Ft. of Conditioned Space | 524 SF |
| Front Porch 4'-4" x 4'-4" | |

Features:

- Open Living Space, Kitchen and Dining Area
- 1-Full Bath with Tub/ Shower Combination, Vanity Sink and Water Closet
- Building Designs to Meet High Wind Conditions-Depending on each Local.
- HVAC-Central Fredrich Heat Pump System
- 2-Variable Speed Ceiling Fans
- Adjustable Mood Lighting
- 20-year vinyl flooring and 10 year wear carpet
- Insulated Steel Entrance Door with Half Glass
- Single hung windows with double pane, low “E” glass, screen, and mini blinds
- Pre-finished ¼” wood paneling and ½” vinyl gypsum
- Interior doors are all pre-finished, therefore no painting or staining required

Appliances included:

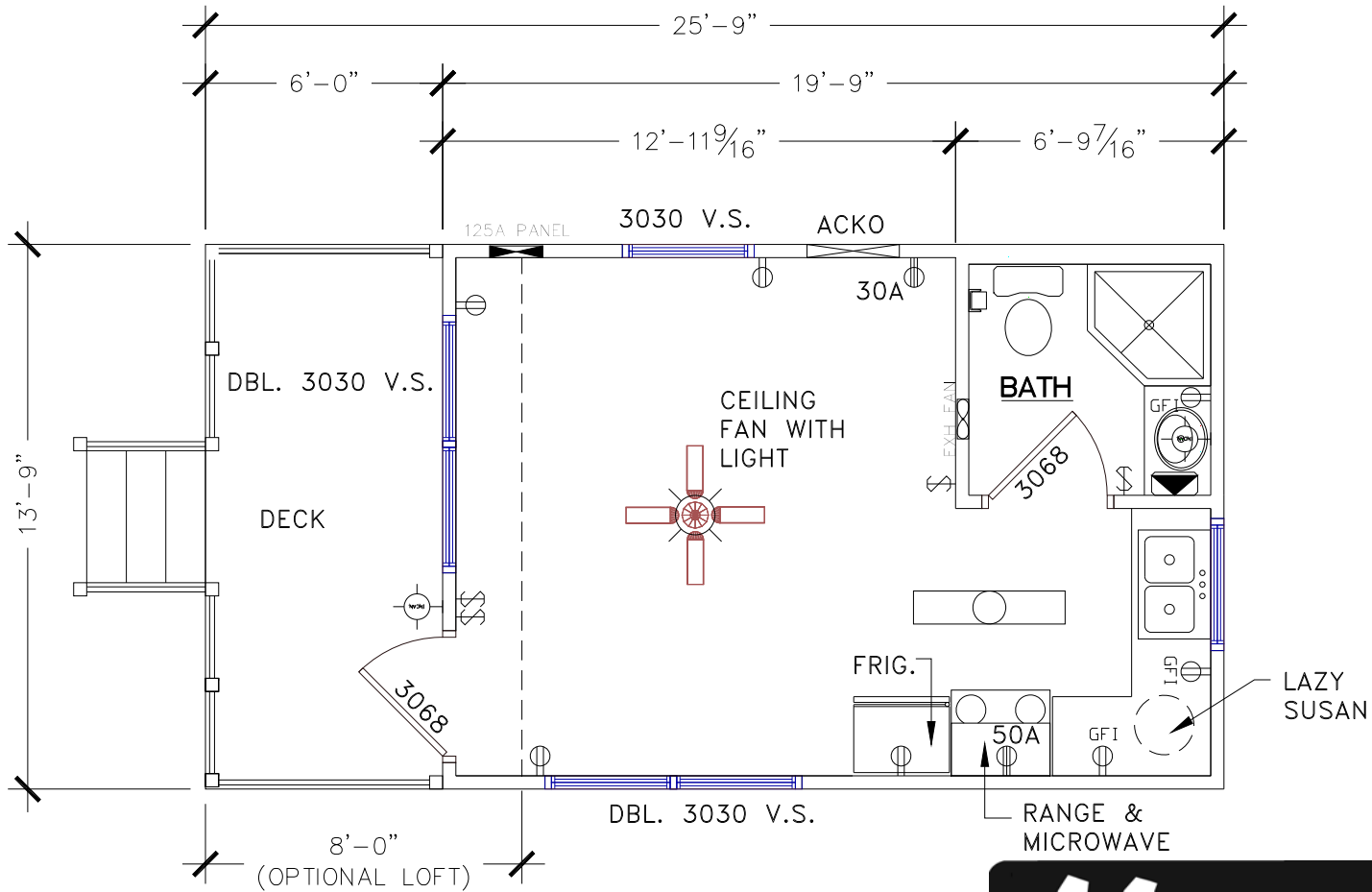
- (1) Electric Cook Top
 - (1) Microwave mounted over Cook Top
 - (1) Under the Counter Refrigerator
- Furniture options available. (TV is not a part of Furniture option)

Hidden Features:

- All joists and floor framing is treated with 15% solution of borate for protection against termites.
- All exterior bands are pressure treated with ACQ and painted for maximum protection against the elements and insects
- 6” x 6” pressure treated graders designed for a lifetime warranty
- Exterior shown with Smart Panel siding. (See Literature enclosed)
- Select from the custom colors of Smart Panel or choose from our wide variety of pre-finished painted steel siding and trim.

14' X 20'-DRAWING A11

"The South Wind"



11 FLOOR PLAN
SCALE: N.T.S.





14' x 26' – DRAWING A10- *"The South Wind"*

| | |
|--|--------|
| Square Feet of Conditioned Floor Space | 280 SF |
| Loft 8' x 14' | 112 SF |
| Total Sq. Ft. of Conditioned Space | 392 SF |
| Front Porch 6' x 14' | |

Features:

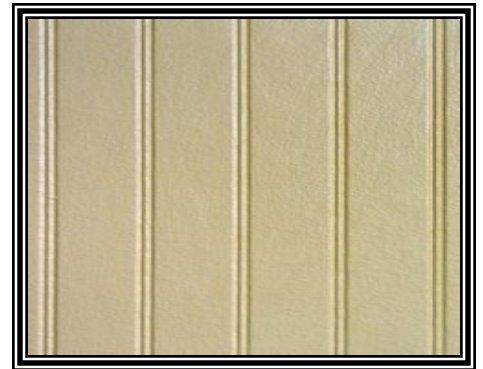
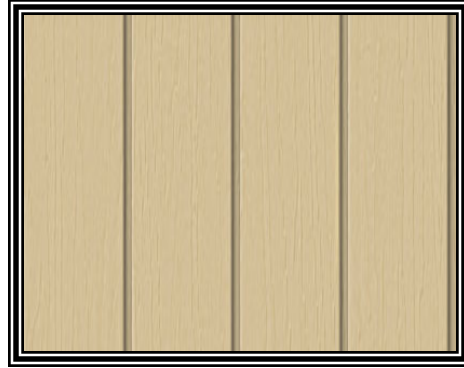
- Open Living Space, Kitchen and Dining Area
- 1-Corner Shower, Vanity Sink and Water Closet
- Building Designs to Meet High Wind Conditions-Depending on each Local.
- HVAC-Central Fredrich Heat Pump System
- 2-Variable Speed Ceiling Fans
- Adjustable Mood Lighting
- 20-year vinyl flooring and 10 year wear carpet
- Insulated Steel Entrance Door with Half Glass
- Single hung windows with double pane, low "E" glass, screen, and mini blinds
- Pre-finished ¼" wood paneling and ½" vinyl gypsum
- Interior doors are all pre-finished, therefore no painting or staining required
- Appliances included:
 - (1) Electric Range/Oven
 - (1) Microwave mounted over Range
 - (1) Frost Free Refrigerator
- Furniture options available. (TV is not a part of Furniture option)

Hidden Features:

- All joists and floor framing is treated with 15% solution of borate for protection against termites.
- All exterior bands are pressure treated with ACQ and painted for maximum protection against the elements and insects
- 6" x 6" pressure treated graders designed for a lifetime warranty
- Exterior shown with Smart Panel siding. (See Literature enclosed)
- Select from the custom colors of Smart Panel or choose from our wide variety of pre-finished painted steel siding and trim.

Morgan

And Exteriors



Morgan

Kitchen



Morgan

Loft



Morgan

*Living Room and
Front Loft*



Morgan

Dining Area



Morgan

Shower & Vanity



Morgan

Bedroom



Morgan

Laundry and Pantry

